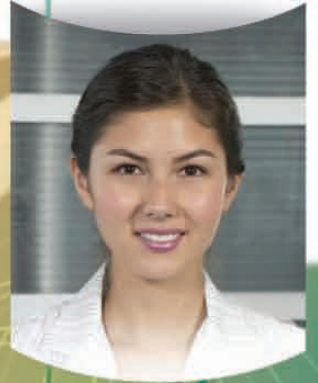


# Canon



CORPORATE SOLUTIONS

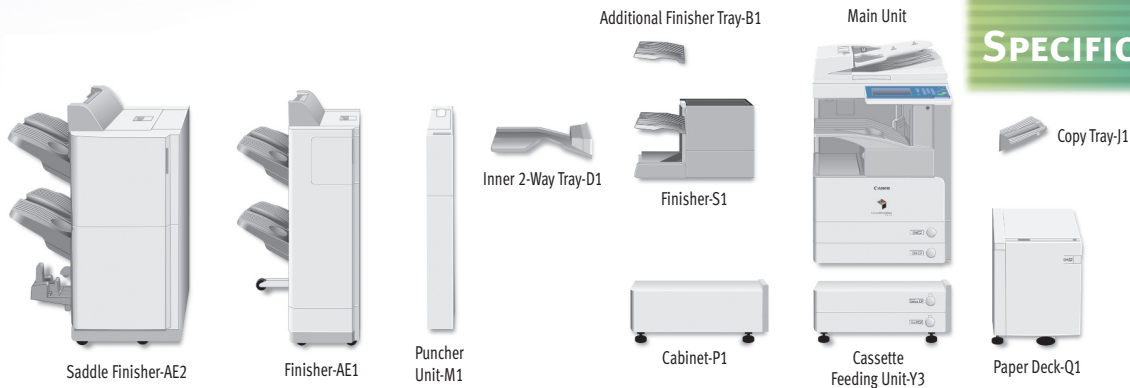


 **imageRUNNER®**  
3245 / 3245i

 **imageRUNNER®**  
3235 / 3235i

**meap**  
POWERED BY I

# SPECIFICATIONS



## MAIN UNIT

Type:	Monochrome Digital Multifunction Imaging System
Copying Method:	Laser Dry Electrostatic Transfer
Developing System:	Dry Monocomponent Toner Projection
Fixing System:	RAPID Fusing System
Std. Memory	
imageRUNNER 3245/3235:	512MB RAM + 256MB RAM
imageRUNNER 3245i/3235i:	1GB RAM + 256MB RAM
Max. Memory:	1GB RAM + 768MB RAM
Hard Disk Drive:	60GB
Copy/Print Speed (Letter)	
imageRUNNER 3245/3245i:	Up to 45 ppm
imageRUNNER 3235/3235i:	Up to 35 ppm
First-Copy Time:	3.9 Seconds (From Platen Glass) 5.9 Seconds (From DADF)
Warm-Up Time:	10 Seconds or Less From Sleep Mode 35 Seconds or Less From Main Power Off
Network Interface Connections:	10/100/1000 Base-TX (RJ-45), USB 2.0 (Device), USB 2.0 (Host) x 2
Acceptable Originals:	Sheets, Books, and 3-Dimensional Objects up to 4.4 lb.
Max. Original Copy Size:	11" x 17"
Min. Copy Size:	3-7/8" x 5-7/8" (Stack Bypass)
Acceptable Paper Sizes:	11" x 17", Legal, Letter, Letter-R
Scan Resolution:	600 x 600 dpi
Copy Resolution:	1200 x 600 dpi (Interpolated)
Print Resolution:	1200 x 1200 dpi*
Half-tone:	256 Gradations of Gray
Document Feeding Method:	100-Sheet Duplexing Automatic Document Feeder (Standard)
Duplexing:	Standard Automatic Trayless Duplexing
Paper Supply Standard:	Dual 550-Sheet Paper Cassettes + 50-Sheet Stack Bypass
Optional:	Dual 550-Sheet Paper Cassettes + 2,700-Sheet Paper Deck
Maximum:	4,950 Sheets
Acceptable Paper Sizes Upper Cassette:	Legal, Letter, Letter-R, Statement-R, Executive
Lower Cassette:	11" x 17", Legal, Letter, Letter-R, Statement-R, Executive
Stack Bypass:	11" x 17", Legal, Letter, Letter-R, Statement-R, Executive, Free Size (3-7/8" x 5-7/8" to 11-5/8" x 17"), and Envelopes
Acceptable Paper Weight Cassettes:	17 lb. to 24 lb. Bond
Stack Bypass:	17 lb. to 32 lb. Bond
Dimensions (H x W x D):	35-1/2" x 22-1/4" x 27-5/8" (901mm x 565mm x 700mm)
Weight:	181 lb. (82kg)
Power Requirements:	120V AC, 60Hz, 10A

Power Consumption:	1.41kW (Max.)
Plug:	NEMA 5-15P
Toner (Estimated Yield):	24,000 Impressions at 6% Image Coverage
<b>Copy Features</b>	
Multiple Copies:	1 - 999
Max. Copy Reservation:	20 Jobs
Exposure:	Automatic or Manual (9 Levels)
Magnification	
Preset Reduction:	25%, 50%, 64%, 73%, 78%
Preset Enlargement:	121%, 129%, 200%, 400%
Zoom Mode	
Platen:	25% - 400% (in 1% Increments)
DADF:	25% - 200% (in 1% Increments)
<b>Print Features</b>	
CPU:	Canon Custom Processor
Std. Memory	
imageRUNNER 3245/3235:	512MB RAM + 256MB RAM (Shared)
imageRUNNER 3245i/3235i:	1GB RAM + 256MB RAM (Shared)
Max. Memory:	1GB RAM + 768MB RAM (Shared)
Hard Disk Drive:	60GB (Shared)
Maximum Print Resolution:	1200 x 1200 dpi*
Supported PDL	imageRUNNER 3245/3235: Std. UFR II, Opt. PCL 5e/6, PS 3 em. imageRUNNER 3245i/3235i: Std. UFR II, PCL 5e/6, PS 3 em.
Supported OS	
UFR II:	Windows® 2000/XP/Server 2003/Windows Vista® Citrix MetaFrame Macintosh® OS X (OS 10.2.8 or later)
PCL 5e/6:	Windows 2000/XP/Server 2003/Windows Vista Citrix MetaFrame
PS 3 em.:	Windows 2000/XP/Server 2003/Windows Vista Citrix MetaFrame Macintosh OS X (OS 10.3.8 or later)
<b>Mail Box Features</b>	
Max. Mail Boxes Supported:	100 User Inboxes, One Memory RX Inbox, 50 Confidential Fax Inboxes
<b>Scan Features</b>	
Network TWAIN Scan:	Standard
Network Scan Utility:	Color Network ScanGear
<b>Color Universal Send Features (Standard for 3245i/3235i models; Optional on 3245/3235 models)</b>	
Color Mode:	Auto Color Select (Full Color/Grayscale) Auto Color Select (Full Color, B/W) Full Color Grayscale, B/W
Address Book Capacity:	Max. 1,800 Destinations (Includes 200 One-Touch Buttons) Max. 5 LDAP Servers
Sending Methods:	E-mail, I-fax, SMB, File Server (FTP, IPX, WebDAV), User Inbox, Super G3 Fax (Optional)
Communication Protocol	
File:	FTP (TCP/IP), SMB (TCP/IP), NCP (IPX), WebDAV
E-mail/I-fax:	SMTP, POP3, I-fax (Simple, Full)

<b>Data Format</b>	
File, E-mail:	TIFF, JPEG, PDF, XPS, PDF/XPS (Compact),** PDF (Trace & Smooth),** PDF/XPS (OCR),** Encrypted PDF,** Digital Device Signature PDF/XPS,** Digital User Signature PDF/XPS*
I-fax:	B/W: TIFF (MH, MR, MMR)
<b>USB Memory Media</b>	
Supported Applications:	Scan to USB Memory Media, Print from USB Memory Media
Supported Print File Formats:	TIFF, JPEG, PDF
Supported Scan File Formats:	TIFF, JPEG, PDF, PDF (Compact),** PDF (Trace & Smooth),** PDF (OCR),** Encrypted PDF,** Digital Device Signature PDF,** Digital User Signature PDF*
<b>Required Accessories</b>	
imageRUNNER 3245/3235:	USB Memory Connectivity Kit-A1, PS Printer Kit-AA1 or Direct Print Kit-F1 for printing
imageRUNNER 3245i/3235i:	USB Memory Connectivity Kit-A1
<b>Duplexing Automatic Document Feeder</b>	
Acceptable Originals:	Statement to 11" x 17"
Acceptable Weights	
One-Sided Scanning:	11 lb. to 32 lb. Bond
Two-Sided Scanning:	13 lb. to 32 lb. Bond
Paper Capacity:	100 Sheets (20 lb. Bond)
<b>OPTIONAL ACCESSORIES</b>	
<b>Cassette Feeding Unit-Y3</b>	
Acceptable Paper Sizes:	11" x 17", Legal, Letter, Letter-R, Statement-R, Executive
Paper Capacity:	Dual 550-Sheet Cassettes (1,100 Sheets at 20 lb. Bond)
Acceptable Paper Weight:	17 lb. to 24 lb. Bond
Weight:	Approx. 50.7 lb. (23kg)
<b>Paper Deck-Q1</b>	
Acceptable Paper Size:	Letter
Paper Capacity:	2,700 Sheets (20 lb. Bond)
Acceptable Paper Weight:	17 lb. to 24 lb. Bond
Dimensions (H x W x D):	18-5/8" x 14-5/8" x 23-1/4" (473mm x 372mm x 591mm)
Weight:	Approx. 65.3 lb. (29.6kg)
<b>Inner 2-Way Tray-D1</b>	
Number of Trays:	Two
Acceptable Paper Sizes:	11" x 17", Legal, Letter, Letter-R, Statement-R, Executive, Envelope, FreeSize (3-7/8" x 5-7/8" to 11-3/4" x 17")
Acceptable Paper Weight:	17 lb. to 32 lb. Bond
Paper Capacity Per Tray	
Upper Tray:	100 Sheets (LTR), 50 Sheets (Other Sizes)
Lower Tray:	250 Sheets (LTR), 100 Sheets (Other Sizes)
Attachable Accessories:	Copy Tray-J1
<b>Finisher-S1</b>	

Specifications are continued on back.

Number of Trays: One (Second Tray Optional)

Acceptable Paper Sizes: 11" x 17", Legal, Letter, Letter-R, Statement-R, Executive, Envelope, Freesize (3-7/8" x 5-7/8" to 11-3/4" x 17")

Acceptable Paper Weight: 17 lb. to 32 lb. Bond

Tray Capacity  
 Non-collate, Collate, Group Mode: 1,000 Sheets (Letter, Statement-R) 500 Sheets (11" x 17", Legal, Letter-R)

Staple Mode: 1,000 Sheets/30 Sets (Letter) 500 Sheets/30 Sets (11" x 17", Legal, Letter-R)

Tray Capacity (with Additional Finisher Tray-B1)  
 Non-collate, Collate, Group Mode: 300 Sheets Per Tray (Letter, Statement-R) 150 Sheets Per Tray (11" x 17", Legal, Letter-R)

Staple Mode: 300 Sheets/30 Sets Per Tray (Letter) 150 Sheets/30 Sets Per Tray (11" x 17", Legal, Letter-R)

Staple Position  
 Top Left Corner: 11" x 17" (Landscape), Legal (Landscape), Letter, Letter-R  
 Top Right Corner: 11" x 17" (Portrait), Legal (Portrait)

Max. Stapling Capacity: 50 Sheets (Letter) 30 Sheets (11" x 17", Legal, Letter-R)

Attachable Accessories: Additional Finisher Tray-B1 Puncher Unit-R1 Copy Tray-J1

**Puncher Unit-R1 (Option for Finisher-S1)**  
 Acceptable Paper Sizes: 11" x 17", Legal, Letter, Letter-R  
 Acceptable Paper Weight: 17 lb. to 32 lb. Bond  
 Punch Type  
 Two Holes: Legal, Letter-R  
 Three Holes: 11" x 17", Letter  
 Punch Waste Capacity  
 Two Holes: Approx. 2,500 Sheets  
 Three Holes: Approx. 1,500 Sheets

**Finisher-AE1/Saddle Finisher-AE2**  
 Number of Trays: 2 Trays  
 Acceptable Paper Sizes: 11" x 17", Legal, Letter, Letter-R, Statement, Statement-R, Executive, Envelope, Freesize (3-7/8" x 5-7/8" to 11-3/4" x 17")  
 Acceptable Paper Weight: 17 lb. to 32 lb. Bond

Tray Capacity  
 Non-collate, Collate, Group Mode: 1,000 Sheets (Letter, Statement-R, Executive) 500 Sheets (11" x 17", Legal, Letter-R)

Staple Mode: 1,000 Sheets/30 Sets (Letter, Executive) 500 Sheets/30 Sets (11" x 17", Legal, Letter-R)

Staple Positions: Corner Staple, Double-Staple

Max. Stapling Capacity: 50 Sheets (Letter, Executive) 30 Sheets (11" x 17", Legal, Letter-R)

Saddle-Stitching\*  
 Acceptable Paper Sizes: 11" x 17", Legal, Letter-R  
 Saddle-Stitch Capacity: 15 Sheets (60-Page Booklets)  
 Tray Capacity: 25 Sets (1 to 5 Sheets) 15 Sets (6 to 10 Sheets) 10 Sets (11 to 15 Sheets)  
 V-Folding

Folding:  
 Dimensions (H x W x D)  
 Finisher-AE1: 40-7/8" x 25-3/8" x 25-7/8" (1037mm x 643mm x 657mm)  
 Saddle Finisher-AE2: 40-7/8" x 29-3/8" x 25-7/8" (1037mm x 747mm x 657mm)

Attachable Accessories: Puncher Unit-M1

**Puncher Unit-M1 (Option for Finisher-AE1/Saddle Finisher-AE2)**  
 Acceptable Paper Sizes: 11" x 17", Legal, Letter, Letter-R  
 Acceptable Paper Weight: 17 lb. to 32 lb. Bond  
 Punch Type  
 Two Holes: Legal, Letter-R  
 Three Holes: 11" x 17", Letter  
 Punch Waste Capacity: Approx. 3,000 Sheets

**PCL Printer Kit-AA1 (Standard for imageRUNNER 3245i/3235i Models)**  
 PDL: PCL 5e, PCL 6  
 Internal Fonts: 80 Scalable Fonts, 30 Barcode, 10 Bitmap, 2 OCR Fonts  
 Supported OS: Windows 2000/XP/Server 2003/Windows Vista Citrix MetaFrame

**PS Printer Kit-AA1▲▲ (Standard for imageRUNNER 3245i/3235i Models)**  
 PDL: PostScript 3 Emulation  
 Internal Fonts: 136 Scalable Fonts  
 Supported OS: Windows 2000/XP/Server 2003/Windows Vista Citrix MetaFrame Macintosh OS X (OS 10.3.8 or later)

### Super G3 Fax Board

Applicable Line: Public Switched Telephone Network (PSTN)

Connection Lines: Up to 3

Sending/Original Size: Statement to 11" x 17"

Receiving/Printing Size: Statement to 11" x 17"

### OTHER OPTIONAL ACCESSORIES

- Cabinet-P1
  - FL Cassette-Y1 (replacement)
  - FL Cassette-Z1 (replacement)
  - Envelope Feeder Attachment-C2
  - Copy Tray-J1
  - Document Tray-J1
  - Card Reader-C1
  - Carder Reader Kit-B3
  - PCL Printer Kit-AA1°
  - PS Printer Kit-AA1°
  - Direct Print Kit-F1°
  - Barcode Printing Kit-A1▲▲
  - Encrypted Secure Print Software-C1▲▲
  - Color Universal Send Kit-P1°
  - Universal Send Advanced Feature Set-B1†††°
  - Universal Send Security Feature Set-B1†††°
  - Digital User Signature Kit-B1
  - eCopy Suite
  - Web Access Software-G1†
  - USB Memory Connectivity Kit-A1
  - Secure Watermark-A1
  - Super G3 Fax Board-AC1
  - Super G3 2nd Line Fax Board-AC1
  - Super G3 2nd/ 3rd Line Fax Board-AC1
  - Additional Memory Type A (512MB)°
  - System Upgrade RAM-A1
  - Access Management System Kit-A2
  - HDD Data Encryption Kit-B5
  - HDD Data Erase Kit-B2
  - Braille Label Kit-E1
  - ADF Access Handle-A1
  - Voice Operation Kit-B1††
  - Voice Guidance Kit-D1
  - Remote Operator's Software Kit-A3
  - Workflow Composer-B3
  - Expansion LAN Board-E1
  - Wireless LAN Board-A1
  - IP Sec Board-A1
  - Removable Hard Disk Drive Kit-C1
- 1200 x 1200 dpi printing resolution is not available with PCL5e.
- \* Available with Saddle Finisher-AE2 only.
- \*\* Requires Universal Send Advanced Features Set-B1 (standard on 3245i/3235i).
- \*\*\* Requires Universal Send Security Feature Set-B1 (standard on 3245i/3235i).
- ▲ Requires Digital User Signature Kit-A1.
- ▲▲ Requires PCL Printer Kit-AA1.
- † Requires Additional Memory Type A to display Web Flash content. Requires the PS Printer Kit-AA1 or Direct Print Kit-F1 if printing PDF files.
- †† Requires Additional Memory Type A.
- ††† Requires Color Universal Send Kit-P1 or USB Memory Connectivity Kit-A1.
- ° Standard with imageRUNNER 3245i/3235i models.

**Canon**  
 image*ANYWARE*

1-800-OK-CANON  
 www.usa.canon.com

Canon U.S.A., Inc.  
 One Canon Plaza  
 Lake Success, NY 11042

As an ENERGY STAR® Partner, Canon U.S.A., Inc. has determined that these products meet the ENERGY STAR guidelines for energy efficiency. ENERGY STAR and the ENERGY STAR mark are registered U.S. marks. Microsoft, PowerPoint, Windows and Windows Vista are registered trademarks of Microsoft Corporation in the United States and/or other countries. Adobe and Illustrator are registered trademarks of Adobe Systems Incorporated in the United States and/or other countries. Macintosh is a trademark of Apple Inc. CANON, IMAGERUNNER, MEAP, and the GENUINE logo are registered trademarks of Canon Inc. in the United States and may also be registered trademarks or trademarks in other countries. IMAGEWARE is a registered trademark of Canon U.S.A., Inc. in the United States and is a trademark of Canon Inc. in certain other countries. IMAGEANYWARE is a trademark of Canon. All other referenced product names and marks are trademarks of their respective owners and are hereby acknowledged. Specifications and availability subject to change without notice. ©2008 Canon U.S.A., Inc. All rights reserved.

0121W538  
 0608-3245/3235-100M-LCR

