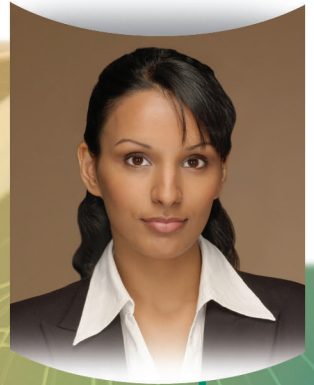


Canon



CORPORATE SOLUTIONS



**Color
imageRUNNER®
C1022 SERIES**

SPECIFICATIONS



Main Unit

Cassette Feeding Unit-AB1

MAIN UNIT

Type:	Color Digital Multifunction Imaging System
Copying Method:	Laser Dry Electrostatic Transfer
Developing System:	Dry Dual Component Developing System
Memory:	Standard: 256MB RAM (C1022) 768MB RAM (C1022i) Maximum: 768MB RAM (C1022/C1022i)
Network Interface Connections:	10/100Base-TX (RJ-45)
Other Interface:	USB 2.0 (Device), USB 2.0 x 2 (Host)
First-Copy Time:	12.5 Seconds (Color) 12.5 Seconds (B/W)
Warm-Up Time:	Less than 60 seconds after Powering On
Copy/Print Speed (B/W, Color):	22/22 ppm (Letter)
Scan Resolution:	600 dpi x 600 dpi
Copy Resolution:	600 dpi x 600 dpi
Print Resolution:	2400 dpi equivalent x 600 dpi
Halftone:	256 Gradations (Continuous-Tone)
Paper Sources	
Standard:	250-Sheet Paper Cassette 100-Sheet Stack Bypass
Optional:	500-Sheet Paper Cassette Feeder
Maximum:	850 Sheets
Paper Sizes	
Drawers:	Legal, Letter, Executive
Bypass:	Legal, Letter, Statement, Executive, Custom size (3" x 5" to 8-1/2" x 14") and Envelopes
Acceptable Paper Weight	
Drawers:	16 lb. Bond to 32 lb. Bond (60-120 g/m ²)
Bypass:	16 lb. Bond to 65 lb. Cover (60-176 g/m ²)
Duplexing:	Standard Automatic Trayless Duplexing (Letter and Legal)
Image Reader:	Standard
Acceptable Originals:	Sheet, Book, 3-Dimensional Objects (up to 4.4 lb.)
Maximum Original Size:	Legal

Document Feeding Method:	Duplexing Automatic Document Feeder (Standard on all models) Statement to Legal 50 Sheets (LTR)/30 Sheets (LGL)
Acceptable Originals:	
Paper Capacity:	
Acceptable Paper Weight of Originals:	Simplex 13 lb. to 32 lb. Bond (1 page) (50 to 128 g/m ²) 13 lb. to 28 lb. Bond (more than 2 pages) (50 to 105 g/m ²) Duplex 17 lb. to 28 lb. Bond (64 to 105 g/m ²)
Scan Speed:	20 ipm (300 dpi) 20 ipm (600 dpi)
Dimensions (H x W x D):	24-7/8" x 21-1/2" x 20-3/4" (Main Unit) 36-7/8" x 21-1/2" x 21-3/8" (with Optional Cassette)
Installation Space (W x D):	21-1/2" x 44-7/8" (with drawer pulled out and with rear cover open)
Weight:	Approximately 96 lb. (44 kg Main Unit including cartridges)
Power Requirements:	120V-127V AC, 50/60Hz, 15A
Power Consumption:	Less than 1,300W (Main Unit) Less than 1,350W (with Optional Cassette)
Plug:	NEMA 5-15P
Cartridge (Estimated Yield):	Black: 6,000 images @ 5% coverage Full Color: 6,000 images @ 5% coverage
Copy Features	
Multiple Copies:	1 to 99
Max. Copy Reservation:	10 Jobs
Color Mode:	Auto Color, Full Color, Black
Copy Exposure:	Automatic or Manual (9 levels)
Magnification	
Preset Reduction:	50%, 64%, 78%
Preset Enlargement:	129%, 200%
Zoom Mode:	50% - 200% (1% increments)
Printing Features	
CPU:	Canon Custom Processor (Shared)
Memory:	Standard: 256MB RAM (C1022) 768MB RAM (C1022i) Maximum: 768MB RAM (C1022/C1022i)
Hard Disk Drive:	N/A
Print Resolution	
UFR II LT:	2400 dpi equivalent x 600 dpi
PCL 5c/6:	2400 dpi equivalent x 600 dpi
Printer Drivers	
UFR II LT:	Windows® (Windows 2000/XP/Server 2003/Server 2008/Vista®), Citrix MetaFrame, Macintosh® (OS 10.2.8 or later)
PCL 5c/6:	Windows (Windows 2000/XP/Server 2003/Server 2008/Vista®), Citrix MetaFrame
Direct Print	
Supported Media:	USB Memory, SD Secure Digital Memory Card, SDHC Memory Card, Compact Flash (CF) Card: Type I/II (3.3 V), Microdrive, Memory Stick, Memory Stick PRO, miniSD Card,* microSD Card,* Memory Stick Duo,* Memory Stick PRO Duo*
Data Format:	TIFF, JPEG

Scan Features	
Network TWAIN Scan:	Standard
Network Scan Utility:	Color Network ScanGear
Scan to USB	
Supported Media:	USB Memory
Data Format:	TIFF, JPEG, PDF, PDF (Compact), PDF (OCR)**
Document Distribution Technology	
Color Mode:	Full Color, B/W
Address Book Capacity:	Max. 300 Destinations (Includes 200 One-Touch Buttons)
Sending Methods:	E-mail, I-fax, SMB, File Server (FTP), Super G3 Fax (Standard on C1022i, Optional for C1022)
Communication Protocol	
File:	FTP (TCP/IP), SMB (TCP/IP)
E-mail/I-fax:	SMTP, POP3, I-fax (Simple)
Data Format	
File, E-mail:	TIFF, JPEG, PDF, PDF (Compact), PDF (OCR)
I-fax:	TIFF (MH, MR, MMR)
OPTIONAL ACCESSORIES	
Super G3 Fax Board-AB1 (Standard on C1022i)	
Applicable Line:	Public Switched Telephone Network (PSTN)
Connection Lines:	One-Line
Sending/Original Size:	Statement to Legal
Recording/Printing Size:	Statement to Legal
PCL Printer Kit-Y1 (Standard on C1022i)*	
CPU:	Canon Custom Processor (Shared)
Supported PDL:	PCL 5c/PCL 6
Print Resolution	
PCL 5c/6:	2400 dpi equivalent x 600 dpi
Printer Drivers	
PCL 5c/6:	Windows (Windows 2000/XP/Server 2003/Server 2008/Vista®), Citrix MetaFrame
Cassette Feeding Unit-AB1	
Paper Sizes:	Legal, Letter, Executive
Paper Drawers Capacity:	500 Sheets x 1 Cassette (20 lb. Bond (75 g/m ²))
Dimensions (H x W x D):	12" x 17-3/8" x 21-3/8"
Weight:	Approximately 28.7 lb. (13 kg)
OTHER OPTIONAL ACCESSORIES	
• Barcode Printing Kit-C1**	• Cabinet Type-A***
• Color Send Kit-W1†	• Card Reader-E1†
• Handset-J1†	• Card Reader Attachment Kit-F1
• System Upgrade RAM-A1†	• Braille Label Kit-E1
Footnotes:	
* Memory cards that can be inserted into the slot using an adapter.	
** Requires Color Send Kit-W1 when configured on C1022 model.	
† Requires System Upgrade RAM-A1 when configured on C1022 model.	
‡ Requires PCL Printer Kit-Y1 when configured on C1022 model.	
§ Standard on C1022i model.	
¶ Requires fax capability for use.	
** Cassette Feeding Unit-AB1 and Cabinet Type-A cannot be installed at the same time.	
□ Requires Card Reader Attachment Kit-F1 for installation.	

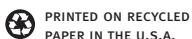


As an ENERGY STAR® Partner, Canon U.S.A., Inc. has determined that these products meet the ENERGY STAR guidelines for energy efficiency. ENERGY STAR and the ENERGY STAR mark are registered U.S. marks. Microsoft, Windows, and Windows Vista are registered trademarks of Microsoft Corporation in the United States and/or other countries. Macintosh is a trademark of Apple Inc. CANON, IMAGERUNNER, and the GENUINE logo are registered trademarks of Canon Inc. in the United States and may also be registered trademarks or trademarks in other countries. IMAGEWARE is a registered trademark of Canon U.S.A., Inc. in the United States and is a trademark of Canon Inc. in certain other countries. IMAGEANYWARE is a trademark of Canon. All other referenced product names and marks are trademarks of their respective owners and are hereby acknowledged. Specifications and availability subject to change without notice. Models shown with optional accessories. ©2008 Canon U.S.A., Inc. All rights reserved.

Federal Law prohibits copying of certain documents. Violators may be subject to penalties. We suggest that you check with your own legal counsel. Canon U.S.A., Inc. and Canon Canada, Inc. intend to cooperate with Law Enforcement Agencies in connection with claims of unauthorized copying.



0119W012
0708-C1022-75M-LIS



1-800-OK-CANON
www.usa.canon.com

Canon U.S.A., Inc.
One Canon Plaza
Lake Success, NY 11042

